



Norwethal Flat

Rams valley, St.Mary's

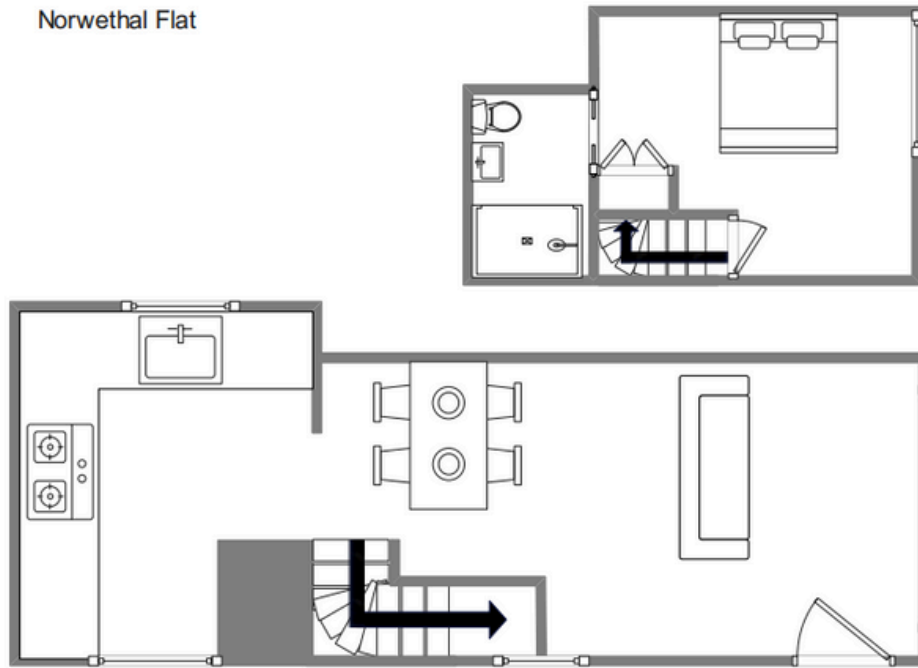


Sleeps 2 | Thursday Change over

- Double arrangement
- Well appointed throughout
- Close to town
- Internet access

This delightful and beautifully presented holiday home is situated in a quiet cul-de-sac close to the heart of Hugh Town and a five-minute walk from Porthcressa Beach. The accommodation's open plan layout comprises a comfortable lounge complete with flat screen TV and DVD player, dining area which can comfortably seat four people and well equipped kitchen, stairs lead up to a carpeted double bedroom with shower room, The heart of Hugh Town and the quay are less than a ten-minute walk away while a fifteen-minute stroll in the opposite direction will take you into Old Town. Norwethal is also very close to the coastal path, which makes it a convenient base for exploring and enjoying the very best the islands have to offer

Layout



Getting to the property

Map of St Marys



Directions from the Quay | Walking time: 8-10 minutes

Head towards the entrance to the quay
Turn left at The Mermaid Inn on to Hugh Street
Continue along Hugh Street to Bordeaux shop
Cross the road to the Town Hall

Walk straight ahead on to Church Street
Turn right at Foredeck Saleroom
Take first left into Rams Valley
Norwethal Flat is about 50 yards on the right

What3words:truckload.penny.proposals